



SANY

Quality Changes the World

Operating Weight : 12400 kg Bucket Capacity : 0.65 m³ Engine Power : 100.5 HP (75 kW)/ 2200 rpm

**EXCELLENT PERFORMANCE
HIGH RELIABILITY
EASE OF SERVICEABILITY**



SY120C-9

HYDRAULIC EXCAVATOR

SPECIFICATIONS

SY120C-9

ENGINE

Model	Cummins B3.9-100c
Type	4 Cylinder, Inline, Water Cooled
Rated Engine Power	100.5HP (75 kW) / 2200 rpm
Max. Torque	385Nm/1300rpm
Battery	2 X 12 V
Displacement	3.9 L

CONTROL SYSTEM

Control Hydraulic System	Load Sensing System
Working Modes	H, S, L, B
Remote Monitoring System	GPRS, GPS, GIS

HYDRAULIC SYSTEM

Main Pumps	1 Variable Displacement Axial Piston Pump
Max. Flow	225 lpm
Pilot Pump	1 Gear Pump
Travel Motor	2 Axial Piston Motor with Parking Brake
Swing Motor	1 Axial Piston Motor with Swing Holding Brake

RELIEF VALVE SETTINGS

Implement Circuit	31.4 Mpa
Swing Circuit	25 Mpa
Travel Circuit	31.4 Mpa
Pilot Circuit	3.9 Mpa

UNDERCARRIAGE & WORKING DEVICE

Track Shoes (Each Side)	41
Upper Roller (Each Side)	1
Lower Roller (Each Side)	6
Track Guard (Each Side)	1
Std. Track	500 mm
Std. Boom	4260 mm
Std. Arm	1960 mm
Std. Bucket	0.65 m ³

PERFORMANCE

Max. Travel Speed(High/Low)	5.5 / 3.5 km/h
Swing Speed	12 rpm
Grade ability	70% / 35°
Ground Pressure	41.6 Kpa
Max. Tracking Force	113 KN
Bucket Digging Force	82.5 KN
Arm Digging Force	62.1 KN

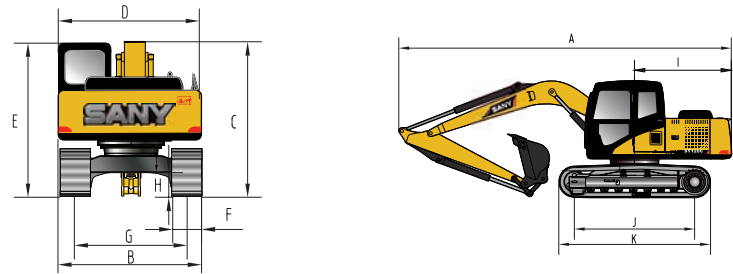
SERVICE REFILL CAPACITIES

Hydraulic Tank	150 L (Tank)	120 L (Refill)
Fuel Tank	240 L	
Engine Oil	9 L	
Radiator	6.7 L	
Swing Device	3 L	
Travel Device	2x2.22 L	

CAB

AC	Opt.
Cabin Guard	Opt.

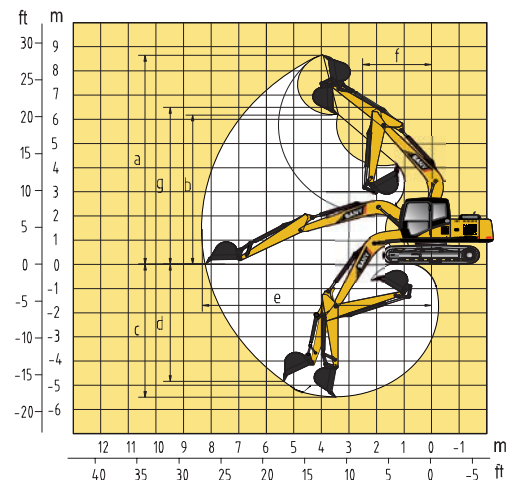
DIMENSION (Unit: mm)



DIMENSION (Unit: mm)

Dimension	Value
A. Overall Length	7280
B. Overall Width	2510
C. Overall Height	2700
D. Upper Width	2525
E. Overall Height of Cab	2740
F. Std. Track Shoe Width	500
G. Track Gauge	1990
H. Min. Ground Clearance	425
I. Rear-end Swing Radius	2280
J. Distance between Tumbles	2680
K. Under Carriage Length	3360

WORKING RANGE



WORKING RANGE (Unit: mm)

Dimension	Value
a. Max. Cutting Height	7415
b. Max. Dumping Height	5165
c. Max. Digging Depth	4750
d. Max. Vertical Digging Depth	4410
e. Max. Digging Reach	7345
f. Min. Swing Radius	2625
g. Max. Height at Min. Swing Radius	5900

BUCKET

Capacity (m ³)	Width (mm)	Weight (kg)	Tooth Point	Arm Length (m)
0.65 GP- Std.	1010	568	5	1.96

SANY HEAVY INDUSTRY INDIA PVT. LTD.

HEAD OFFICE

Address : Plot No. E-4, Chakan Industrial Area Phase-III,
Village Kuruli, Taluka Khed, District Pune - 410501,
Maharashtra, INDIA.

Tel : +91 21 35670288, Fax: +91 21 35670300

E-mail : customer@care@sany.in

Website : www.sany.in

Toll Free No.: 1800-209-3337



Material & specification are subject to change without prior notice in accordance with our continuous technical innovations. Featured machines in photos may include additional equipment.