

**BRAND NEW**  
Long Reach Excavator



**SANY**  
Quality Changes the World

Operating Weight : 28610 kg    Bucket Capacity : 0.65 m<sup>3</sup>    Engine Power : 173 HP (128.5 kW)/ 2100 rpm

**India's No 1**

Long Reach Excavator With  
More power & Working Ranges

**18m Reach**

**14m Depth**



**HIGHER RELIABILITY**  
**HIGHER STABILITY**  
**HIGH ADAPTABILITY**



**SY285C-9LR**  
**HYDRAULIC EXCAVATOR**

# SPECIFICATIONS

# SY285C-9LR

## ENGINE

Model	Isuzu CC-6BG1TRP
Type	6 Cylinder, Inline, water cooled
Rated Engine Power	173 HP (128.5 kW)@2100rpm
Max. Torque	637.9 N.m @1800rpm
Batteries	2X2V
Displacement	6.49L

## CONTROL SYSTEM

Control System	DOMCS Intelligent Controller
Working Modes	H,S,L,B
Remote Monitoring System	GPRS, GPS, GIS

## HYDRAULIC SYSTEM

Main Pumps	2 Variable Displacement Axial Piston pumps
Max. Flow	2X246 LPM
Pilot Pump	1 Gear Pump
Travel Motor	2 Axial Piston Motor With Parking Brake
Swing Motor	1 Axial Piston Motor With Swing Holding Brake

## RELIEF VALVE SETTINGS

Implement Circuit	34.3 Mpa
Swing Circuit	25.5 Mpa
Travel Circuit	34.3 Mpa
Pilot Circuit	3.9 Mpa

## UNDERCARRIAGE & WORKING DEVICE

Track Shoes (Each Side)	49
Upper Rollers	2
Lower Rollers	9
Track Guard (Each Side)	2
Std. Track	800 mm
Std. Boom	9800 mm
Std. Arm	7500 mm
Std. Bucket	0.65 m <sup>3</sup>

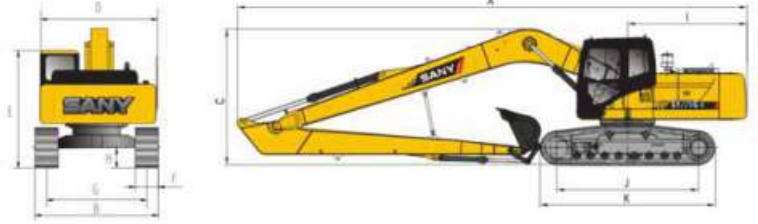
## PERFORMANCE

Max. Travel Speed(High/Low)	5.5/ 3.5 km/h
Swing Speed	11 rpm
Grade ability	70% / 35°
Ground Pressure	48.1kPa
Max. Tracking Force	209kN
Bucket Digging Force	88.4kN
Arm Digging Force	57kN

## SERVICE REFILL CAPACITIES

Hydraulic Tank	239 L(Tank) 201L(Refill)
Fuel Tank	340 L
Engine Oil	24.5 L
Radiator	29 L
Swing Device	5.3 L
Travel Device	2X5 L

## DIMENSION (Unit: mm)

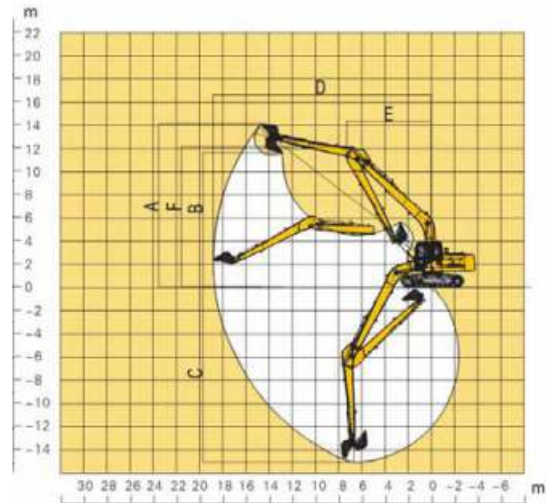


## DIMENSION (Unit: mm)

## Arm 7500

A. Overall Length	13790
B. Overall Width	3180
C. Overall Height	3500
D. Upper Width	2710
E. Overall Height of Cab	2990
F. Std. Track Shoe Width	800
G. Track Gauge	2380
H. Min. Ground Clearance	470
I. Rear-end Swing Radius	2890
J. Distance between Tumbles	3640
K. Under Carriage Length	4445

## WORKING RANGE (Unit: mm)



## WORKING RANGE

## Arm 7500

a. Max. Cutting Height	14070
b. Max. Dumping Height	11820
c. Max. Digging Depth	14190
d. Max. Digging Reach	17770
e. Min. Swing Radius	6515
f. Max. Height at Min. Swing Radius	11010

## SANY HEAVY INDUSTRY INDIA PVT. LTD.

### HEAD OFFICE

Address : Plot No. E-4, Chakan Industrial Area Phase-III,  
Village Kuruli, Taluka Khed, District Pune - 410501,  
Maharashtra, INDIA.

Tel : +91 21 35670288, Fax: +91 21 35670300

E-mail : [customercare@sany.in](mailto:customercare@sany.in)

Website : [www.sany.in](http://www.sany.in)

**Toll Free No.: 1800-209-3337**



Material & specification are subject to change without prior notice in accordance with our continuous technical innovations. Featured machines in photos may include additional equipment.