



SANY

SY80C-9 PRO

***New PRO Series Excavator
For Unmatched Performance***



Operating Weight : 7920 Kg.

Engine Power : Kubota-58HP(43kW) @ 2000rpm

Bucket Capacity : 0.32m³-0.35m³

CHARIOTS
OF DEVELOPMENT

www.sany.in

TECHNICAL SPECIFICATIONS

SPECIFICATIONS

ENGINE

Model	Kubota V2607-DI-T-ES09
Type	4 Cylinder, Inline, water Cooled
Rated Engine Power	58HP(43kW)@2000rpm
Max. Torque	225 Nm@1400rpm
Displacement	2.615 L
Battery	12Vsystem(2-12V)

CONTROL SYSTEM

Control Hydraulic System	Hydraulic Load Sensing System
Working modes	S,L,B
Remote Monitoring System	GPRS, GPS, GIS

HYDRAULIC SYSTEM

Pump

Main Pumps	Variable Displacement Axial Piston Pump
Max. Flow	149 lpm
Travel Motor	2 Axial Piston Motor with Swing Holding Brake

RELIEF VALVE SETTINGS

Implement Circuit	28 Mpa
Swing Circuit	23.5 Mpa
Travel Circuit	26.3z Mpa
Pilot Circuit	3.5 Mpa

UNDERCARRIAGE & WORKING DEVICE

Track Shoes (Each side)	39
Upper Roller (Each side)	1
Lower Roller (Each side)	5
Std. Track	450 mm
Std. Boom	3720 mm
Std. Arm	1620 mm
Bucket	0.35m ³ /0.32m ³

PERFORMANCE

Max. Travel Speed (High/Low)	4.4/2.4 km/h
Swing Speed	11.5rpm
Gradeability	70%/35°
ground Pressure	33Kpa
Max. Tracking Force	58kN
Bucket Digging Force	56kN
Arm Digging Force	38kN

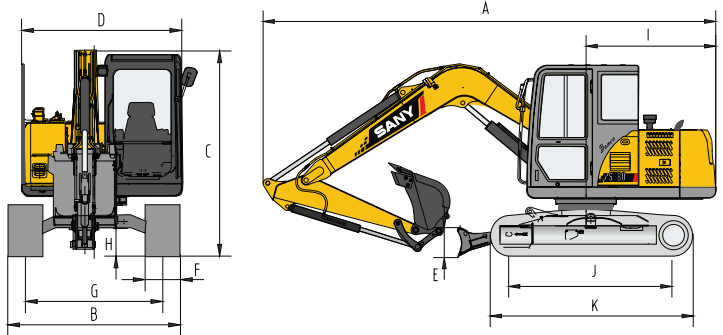
SERVICE REFILL CAPACITIES

Hydraulic Tank	120 L (System)	90L(Refill)
Fuel Tank	150 L	
Engine Oil	10 L	
Radiator	12 L	
Swing Device	1.5L	
Travel Device	2 X 1.2 L	

CAB

AC	Opt
Cab Gurad	Opt

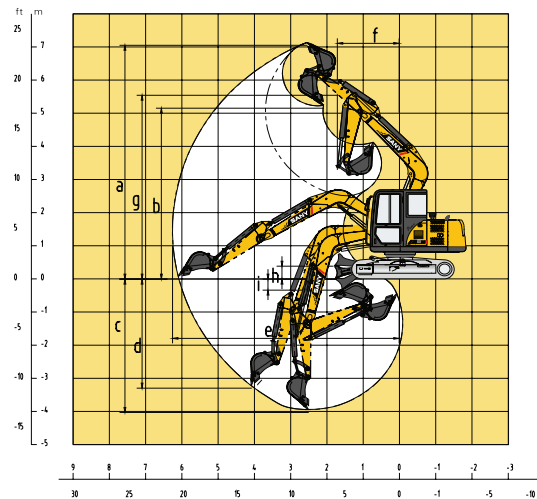
DIMENSION (Unit: mm)



DIMENSION (Unit: mm)

	Arm 1620
A. Overall Length	6125
B. Overall Width	2300
C. Overall Height	2570
D. Upper Width	2040
E. Blade Height	405
F. Std. Track Shoe Width	450
G. Track Gauge	1750
H. Min. Ground Clearance	380
I. Rear-end Swing Radius	1800
J. Distance between Tumbles	2195
K. Under Carriage Length	2820

WORKING RANGE (Unit: mm)



WORKING RANGE

	Arm 1620
a. Max. Cutting Height	7060
b. Max. Dumping Height	5155
c. Max. Digging Depth	4020
d. Max. vertical digging depth	3290
e. Max. Digging Reach	6240
f. Min. swing radius	1720
g. Max Height at min swing radius	5550
h. Max. Ground Clearance of blade UP	350
i. Max. Depth of Blade Down	360

BUCKET

Capacity (m ³)	Width (mm)	Weight (Kg)	Tooth Points	Arm Length 1.62m
0.32m ³	800	240	5	√
0.35m ³	949	285	5	√